

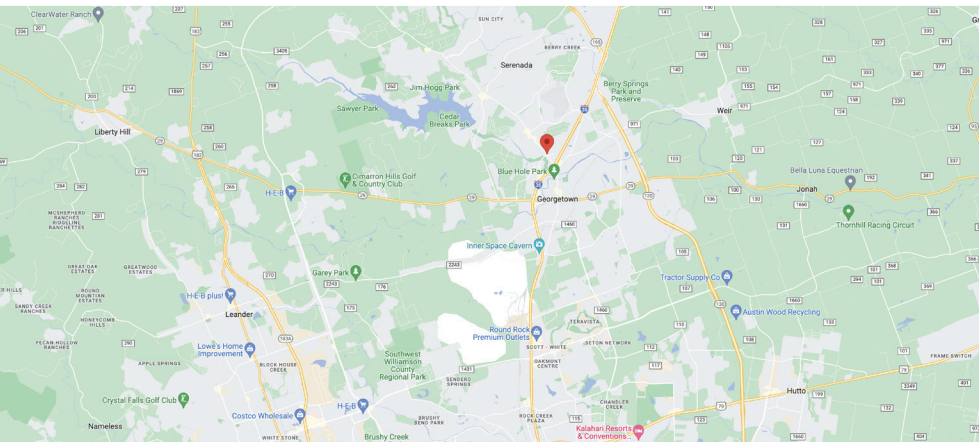
FOR SALE - COMMERCIAL BUILDING

1601 Williams Drive
Georgetown, Texas 78628

TOWER
commercial
CORPORATE REAL ESTATE ADVISORS



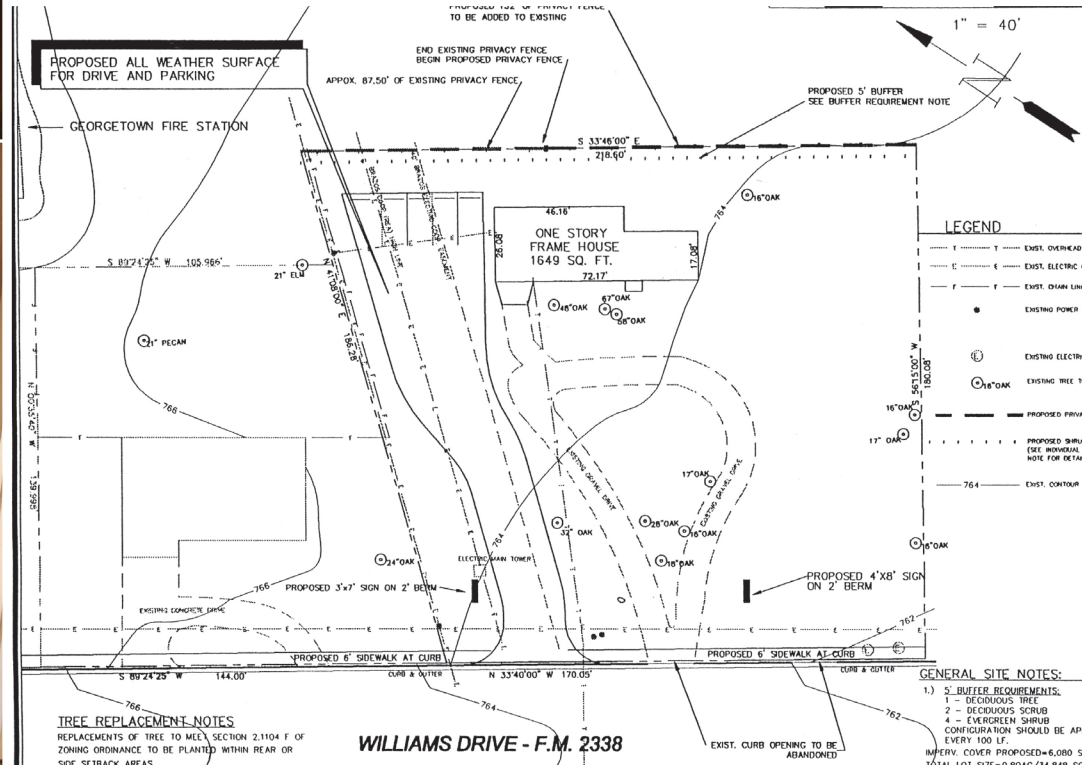
- 1,296 ft. Commercial Building
- Large lot size of 0.80 acres for additional improvements and parking
- Zoned OF
- Allowable uses include general office/professional/personal services, medical/dental offices, banking/financial services, printing/mailing/reproduction services, dry cleaning services (drop off only), and commercial document storage
- High visibility location with over 170 ft of frontage and signage on Williams Dr.
- Within a mile of IH 35, the Georgetown Executive Airport, downtown Georgetown and the Rivery Towne Crossing Shopping Center
- Asking Price ~~\$985,000~~ **\$935,750**



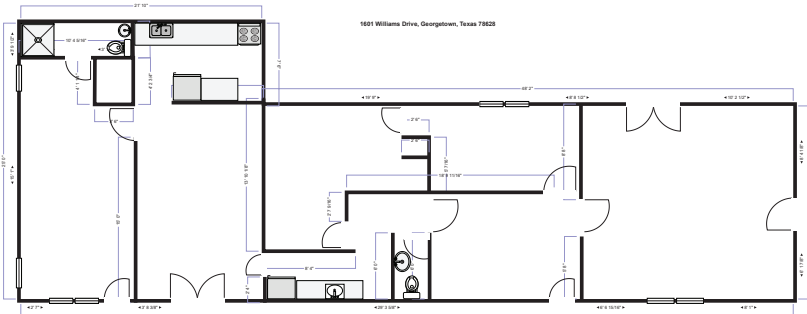
CHRIS ODDO (512) 736-5933
oddo@toweratx.com

5900 Southwest Pkwy | Suite 5-520 | Austin, TX 78735
512.582.0150 | www.toweratx.com

Information contained herein is deemed reliable but not guaranteed and should be independently verified; Broker assumes no responsibility for the accuracy thereof. Offering made subject to errors, omissions, change, sale or withdrawal without notice. Property is offered without regard to race, creed, nationality, disability or gender.



Not To Scale



CHRIS ODDO (512) 736-5933
oddo@toweratx.com

5900 Southwest Pkwy | Suite 5-520 | Austin, TX 78735
512.582.0150 | www.toweratx.com

Information contained herein is deemed reliable but not guaranteed and should be independently verified; Broker assumes no responsibility for the accuracy thereof. Offering made subject to errors, omissions, change, sale or withdrawal without notice. Property is offered without regard to race, creed, nationality, disability or gender.