

FOR LEASE — 1.5 ACRES

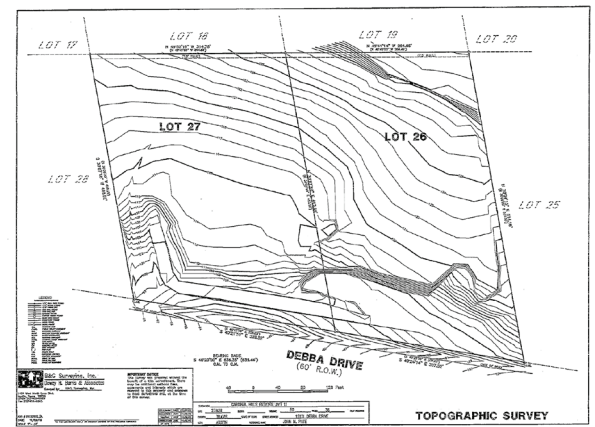
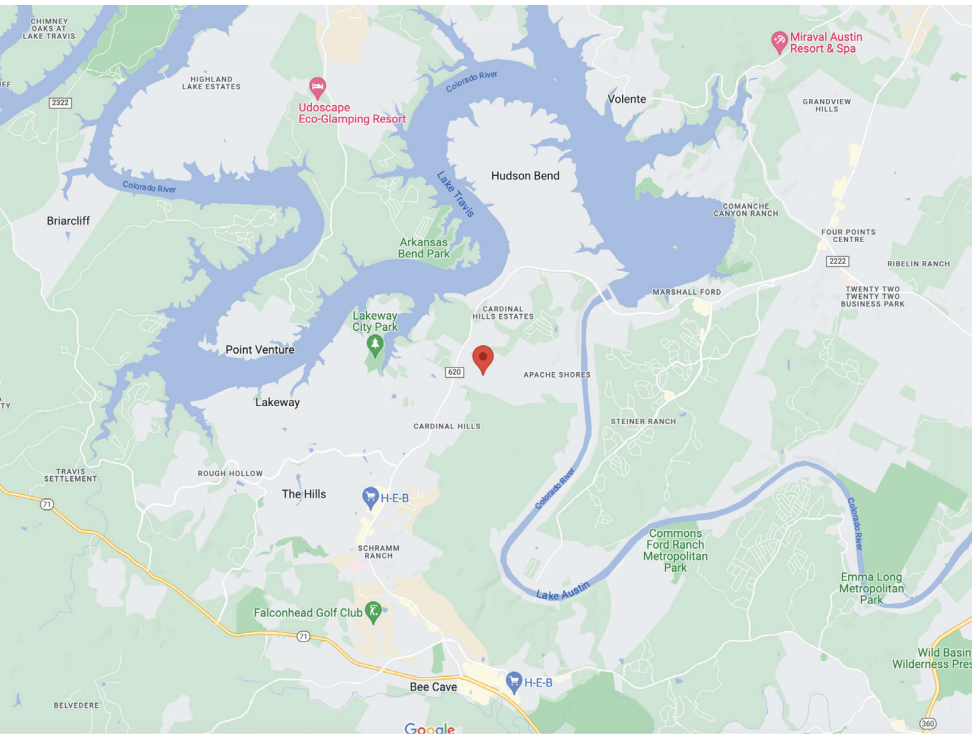
15117 Debba Drive

TOWER
commercial
CORPORATE REAL ESTATE ADVISORS



OFFERING

- Up to 1.5 acres for storage of boats, cars, equipment, etc.
- Contiguous to boxLIFE
- Located off Hwy 620 on 15117 Debba Drive
- Term & Price Negotiable



CHARLIE HILL (512) 293-1434
hill@toweratx.com

5900 Southwest Pkwy | Suite 5-520 | Austin, TX 78735
512.582.0150 | www.toweratx.com

Information contained herein is deemed reliable but not guaranteed and should be independently verified; Broker assumes no responsibility for the accuracy thereof. Offering made subject to errors, omissions, change, sale or withdrawal without notice. Property is offered without regard to race, creed, nationality, disability or gender.