

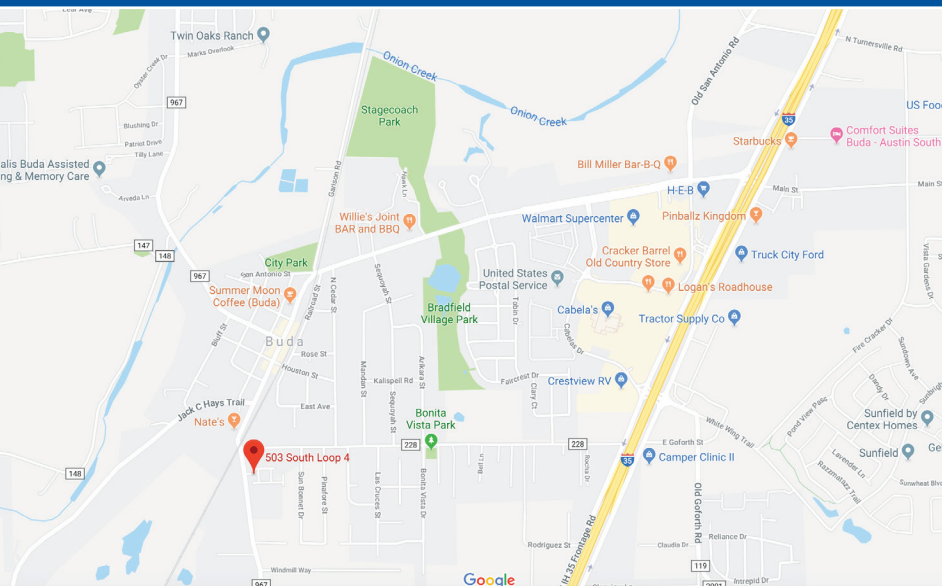
AVAILABLE OFFICE/RETAIL SPACE

503 S Loop 4 | Buda, TX 78610

TOWER
commercial
CORPORATE REAL ESTATE ADVISORS



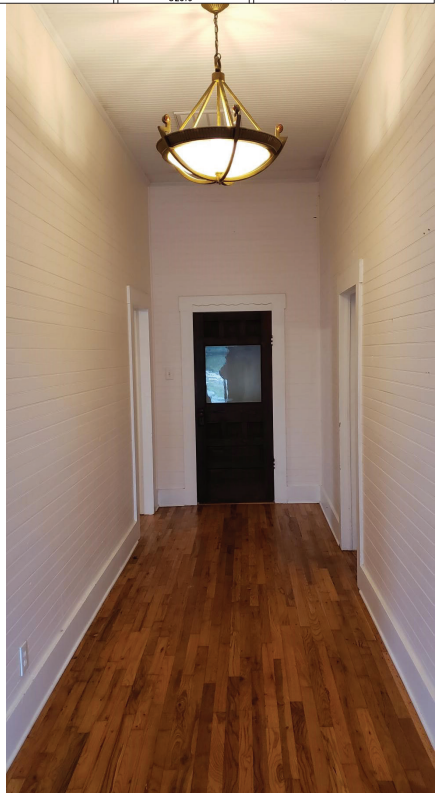
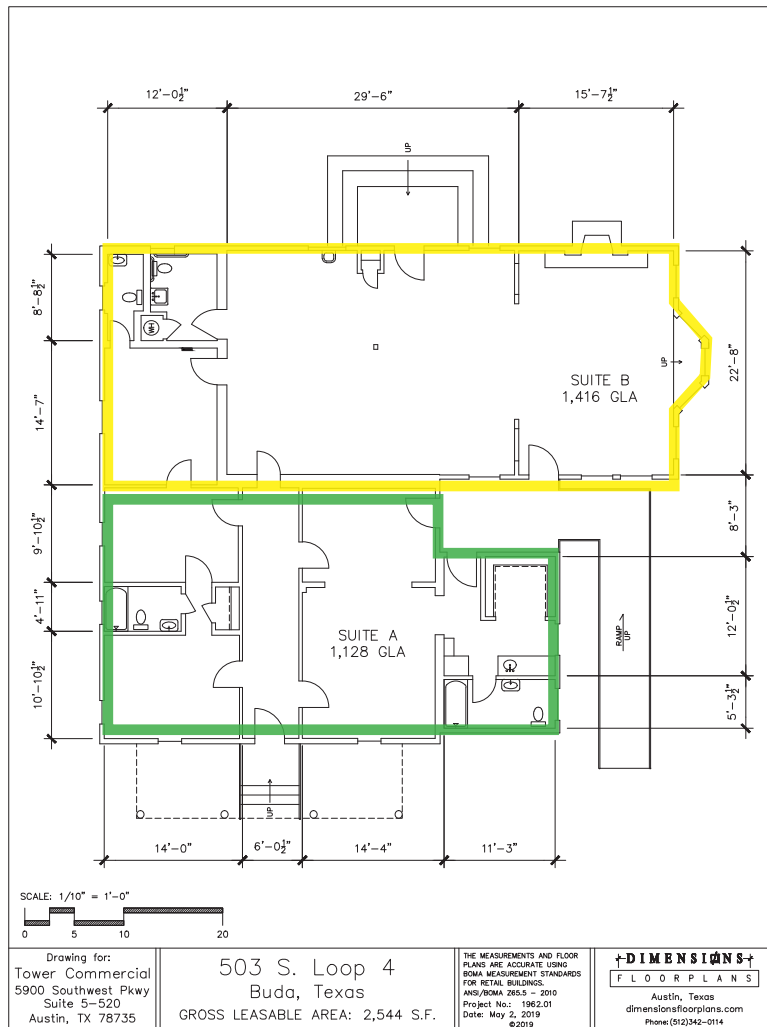
- Two suites = 2,544 sqft; may be leased together or separate
- Suite A: 1,128 ft / 2 Baths / Immediately available
- Suite B: 1,416 ft / 1 Bath / Available May 1, 2020 or sooner
- High ceilings in Suite A with wood floors throughout the entire building
- Several private offices and several large rooms
- 11 parking spaces
- Street signage available
- Asking \$22.50/ft./yr plus expenses of \$6.73/ft./yr.(which includes electricity)
- Near new commercial and residential developments in growing downtown Buda
- New restaurant/bar, brewery, and high end retail in the area



CHRIS ODDO (512) 736-5933
codd@tower-commercial.com

5900 Southwest Pkwy | Suite 5-520 | Austin, TX
78735 512.582.0150 | www.tower-commercial.com

Information contained herein is deemed reliable but not guaranteed and should be independently verified; Broker assumes no responsibility for the accuracy thereof. Offering made subject to errors, omissions, change, sale or withdrawal without notice. Property is offered without regard to race, creed, nationality, disability or gender.



CHRIS ODDO (512) 736-5933
codd@tower-commercial.com

5900 Southwest Pkwy | Suite 5-520 | Austin, TX
78735 512.582.0150 | www.tower-commercial.com

Information contained herein is deemed reliable but not guaranteed and should be independently verified; Broker assumes no responsibility for the accuracy thereof. Offering made subject to errors, omissions, change, sale or withdrawal without notice. Property is offered without regard to race, creed, nationality, disability or gender.