

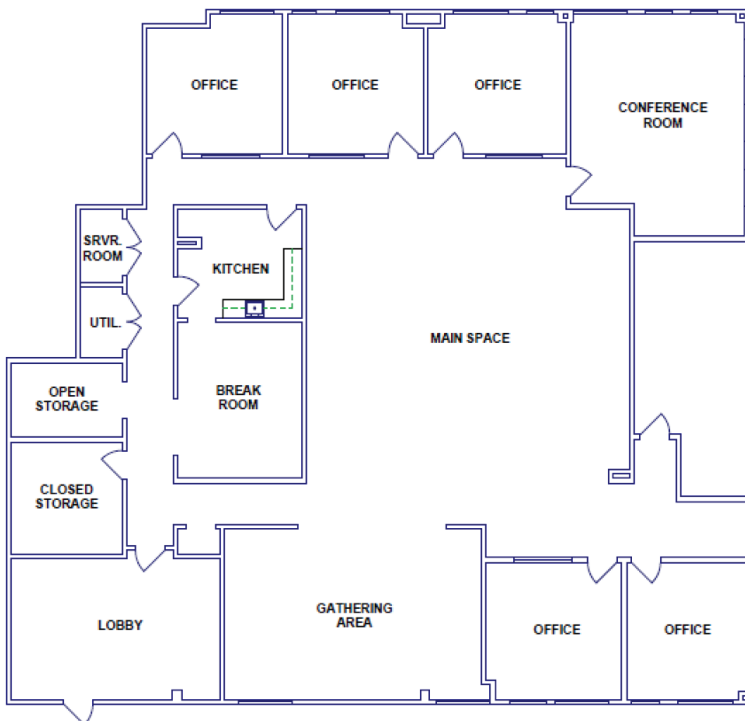
OFFICE SUBLEASE SPACE

4201 West Parmer Lane Suite C-100

TOWER
commercial
CORPORATE REAL ESTATE ADVISORS



- 5,896 Sf
- \$10 Psf Base Rent
- Operating expenses are \$9.66 PSF
- Lease Expires May 31, 2019
- 4:1000 Parking
- Located In Park Forest Office Park
- Furniture Available
- Open Floor Plan – Kitchen – Corner Suite
- Available Now



BILL GUMP (512) 970-6066
bgump@tower-commercial.com

5900 Southwest Pkwy | Suite 5-520 | Austin, TX
78735 512.582.0150 | www.tower-commercial.com

Information contained herein is deemed reliable but not guaranteed and should be independently verified; Broker assumes no responsibility for the accuracy thereof. Offering made subject to errors, omissions, change, sale or withdrawal without notice. Property is offered without regard to race, creed, nationality, disability or gender.