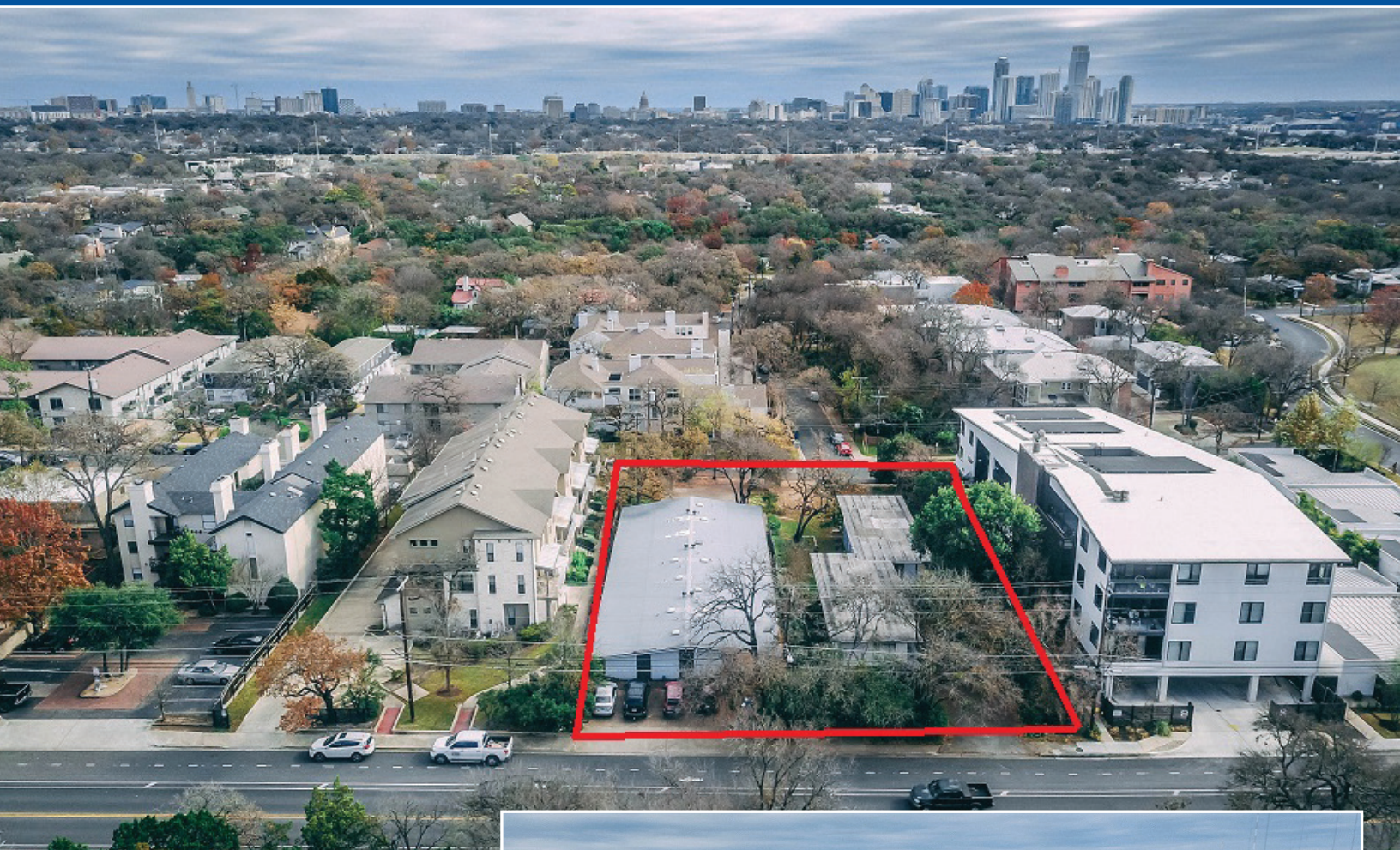


PROPERTY FOR SALE

1300 & 1302 Norwalk

TOWER
commercial
CORPORATE REAL ESTATE ADVISORS



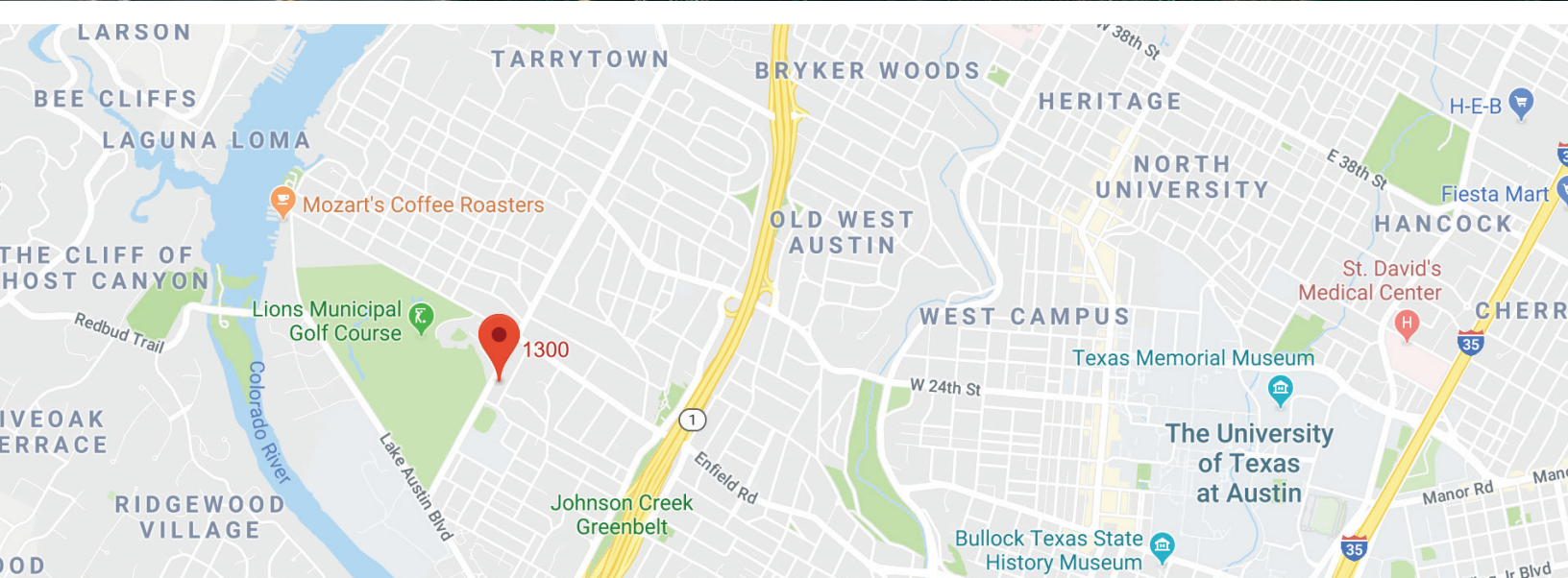
- Frontage on Exposition Blvd.
- 26,125 SF of land
- Zoned MF-3
- Located just north of Lake Austin Blvd & O'Henry Middle School
- Fronts on Exposition Blvd. with views to golf course
- Pricing – contact broker



BILL GUMP (512) 970-6066
bgump@tower-commercial.com

5900 Southwest Pkwy | Suite 5-520 | Austin, TX
78735 512.582.0150 | www.tower-commercial.com

Information contained herein is deemed reliable but not guaranteed and should be independently verified; Broker assumes no responsibility for the accuracy thereof. Offering made subject to errors, omissions, change, sale or withdrawal without notice. Property is offered without regard to race, creed, nationality, disability or gender.



BILL GUMP (512) 970-6066
 bgump@tower-commercial.com

5900 Southwest Pkwy | Suite 5-520 | Austin, TX
 78735 512.582.0150 | www.tower-commercial.com

Information contained herein is deemed reliable but not guaranteed and should be independently verified; Broker assumes no responsibility for the accuracy thereof. Offering made subject to errors, omissions, change, sale or withdrawal without notice. Property is offered without regard to race, creed, nationality, disability or gender.